



CAPITAL HORIZON TERRACES

DUBAI ISLANDS

Set against the stunning backdrop of Dubai Islands, this building enjoys a prime location that effortlessly blends the vibrancy of city life with the tranquility of the surrounding waters. Its elevated position offers sweeping views of the Arabian Gulf, while the island setting provides an exclusive sanctuary, removed from the bustle yet connected to the heart of Dubai's luxury and innovation. This enviable locale is not only a haven of natural beauty but also a testament to the city's commitment to creating extraordinary living spaces.

 GOLD SUOK
7 mins

 LA MER
10 mins

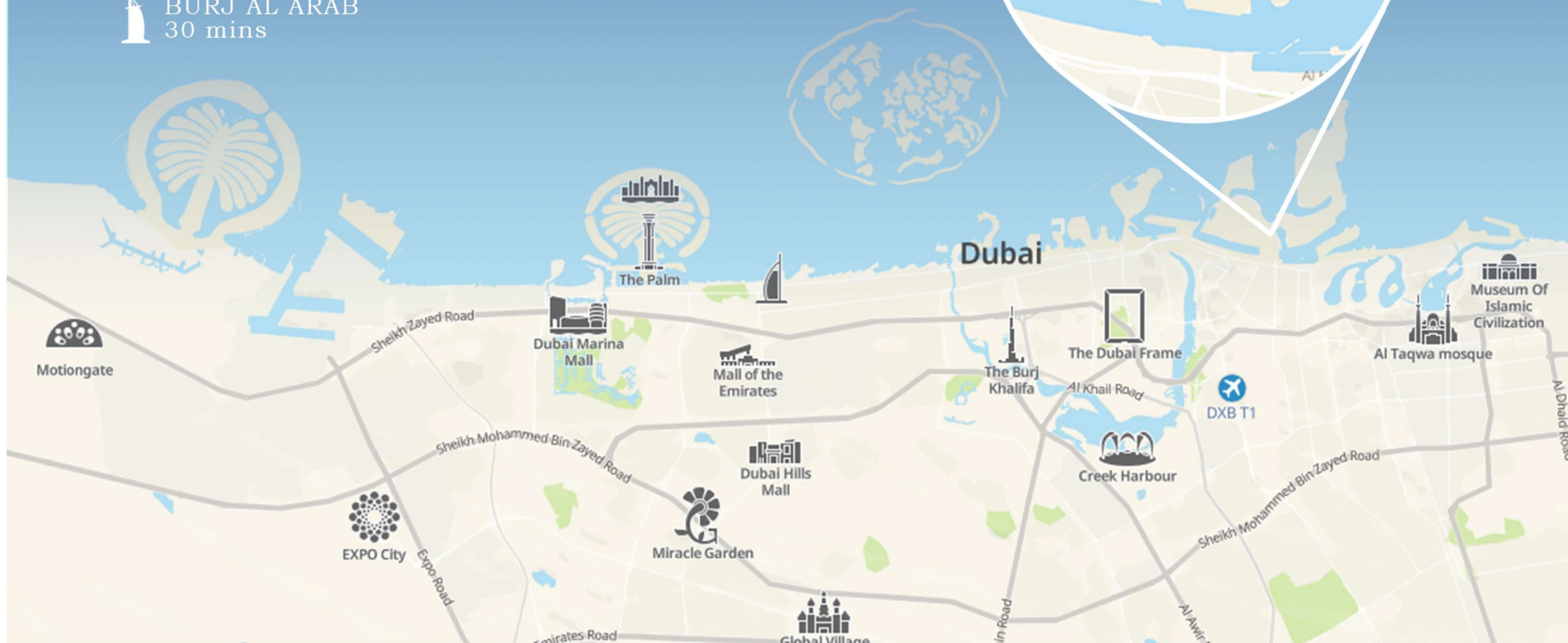
 DXB AIRPORT
15 mins

 CREEK HARBOUR
20 mins

 DOWNTOWN
25 mins

 MUESEUM OF THE FUTURE
25 mins

 BURJ AL ARAB
30 mins



A full-page background image of a calm ocean with gentle, rhythmic waves. The water is a deep blue, and the sky above is a clear, lighter blue. The horizon line is visible in the distance.

A PLACE TO UNWIND



ARCHITECTURE AND DESIGN

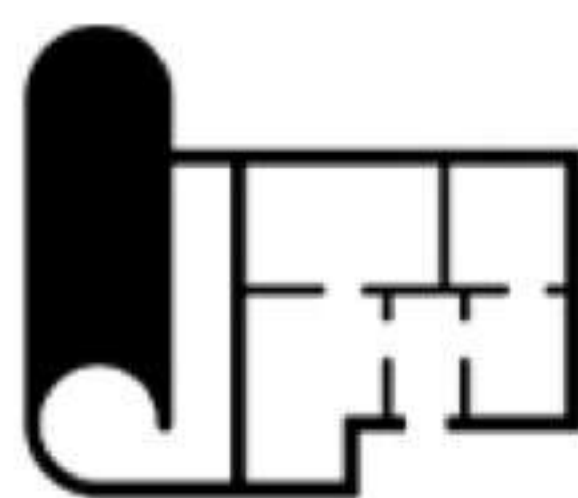
Blending timeless simplicity with modern functionality, the architecture of this building is designed to complement its surroundings in Dubai Islands. Clean lines and an understated façade emphasize practicality and elegance, creating a space where form meets function. With thoughtfully designed interiors and versatile layouts, this development offers a perfect balance between contemporary living and everyday comfort

DESCRIPTION
HANDOVER

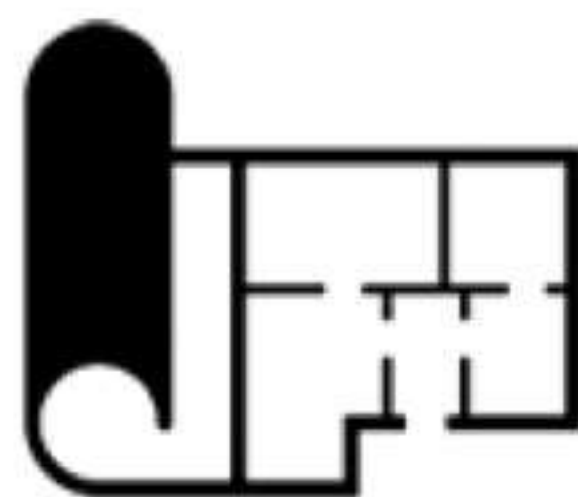
G + P + 8
Q3 2026

REFINED SYMBOL OF ELEGANCE

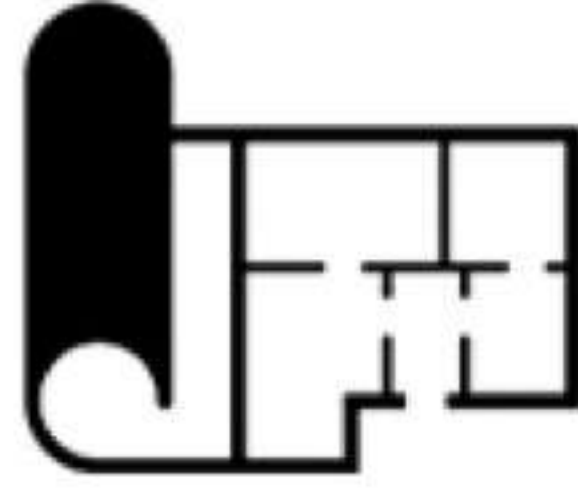
Cirrera offers 63 impeccably designed room units, effortlessly combines luxury and comfort. Each unit exemplifies refined design, integrating contemporary amenities with classic elegance, providing an exclusive and tranquil sanctuary for a truly personalized experience.



1 Bedroom - 15



2 Bedroom - 39



3 Bedroom - 9







A modern, high-end lobby interior. The focal point is a reception desk with a dark wood-grain top and a white marble base. Behind the desk is a large wall with a white marble pattern. On this wall, the text 'CAPITAL HORIZON TERRACES' is displayed in large, white, 3D block letters. Below this text is a logo consisting of a stylized 'C' and 'I' inside a square frame, with the words 'CAPITAL INTL' underneath. The desk is equipped with two black office chairs and a small black lamp. To the left of the desk, there are several vertical wooden slats of varying heights. To the right, there are three vertical light fixtures with gold-colored bases and white shades. A large, modern chandelier with multiple glass shades hangs from the ceiling. The floor is made of large, light-colored tiles with a dark border. The overall design is sleek and contemporary.

CAPITAL HORIZON TERRACES

CAPITAL INTL

LOBBY



Living & Dining





Bedroom





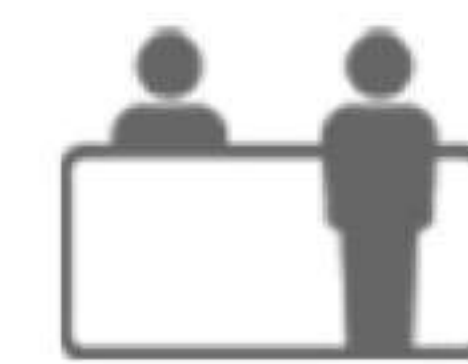
Kitchen



Bathroom



UNMATCHED AMENITIES



SHARED LOBBY



FITNESS GYM



SWIMMING POOL



KIDS SWIMMING
POOL



KIDS PLAY AREA



OUTDOOR YOGA
STUDIO



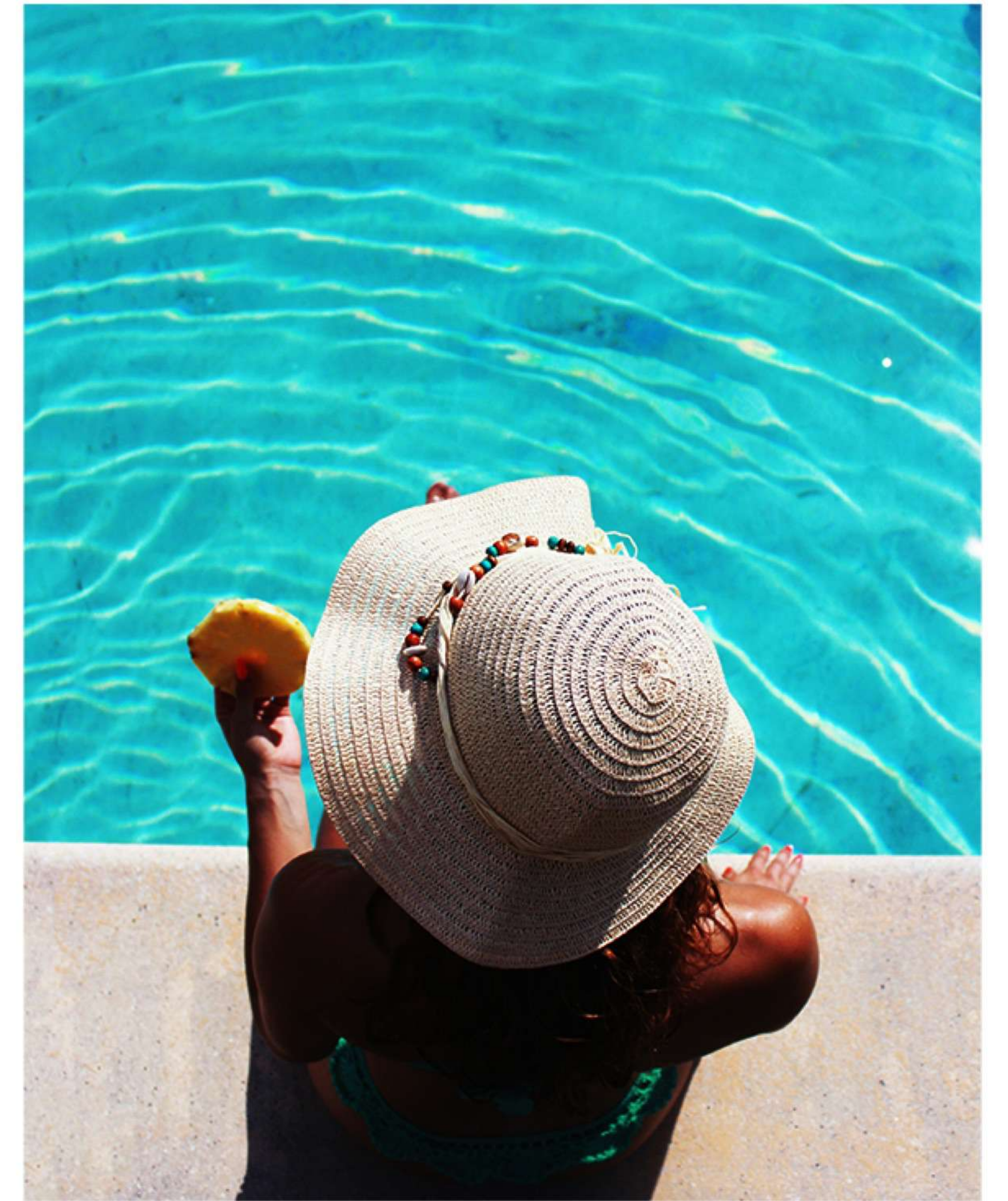
PARKING



OUTDOOR LOUNGE

ADULT AND KIDS' POOLS

Escape to a haven of relaxation at our thoughtfully designed swimming pools. Adults can enjoy a refreshing dip or unwind by the poolside, while families can take advantage of the dedicated kids' pool, ensuring a safe and fun environment for children to play and create joyful memories.





FITNESS GYM

Our Fitness Centre is designed to inspire and support residents in achieving their fitness goals. Outfitted with advanced equipment, it caters to all training levels, offering a diverse selection of exercise machines, tools, and activities to suit every workout routine.

OUTDOOR KIDS AREA

Our residence provides a variety of specially designed kids' facilities to nurture creativity and well-being. The outdoor play area is a vibrant, activity-filled space where children can explore, have fun, and let their imaginations flourish.



